



£210,000

Silton Grove, Hartburn

IH INGLEBY HOMES





Cared for, much improved and a great example of its kind, this traditional, bay-fronted, three bedroom semi-detached home is certainly worthy of early inspection.

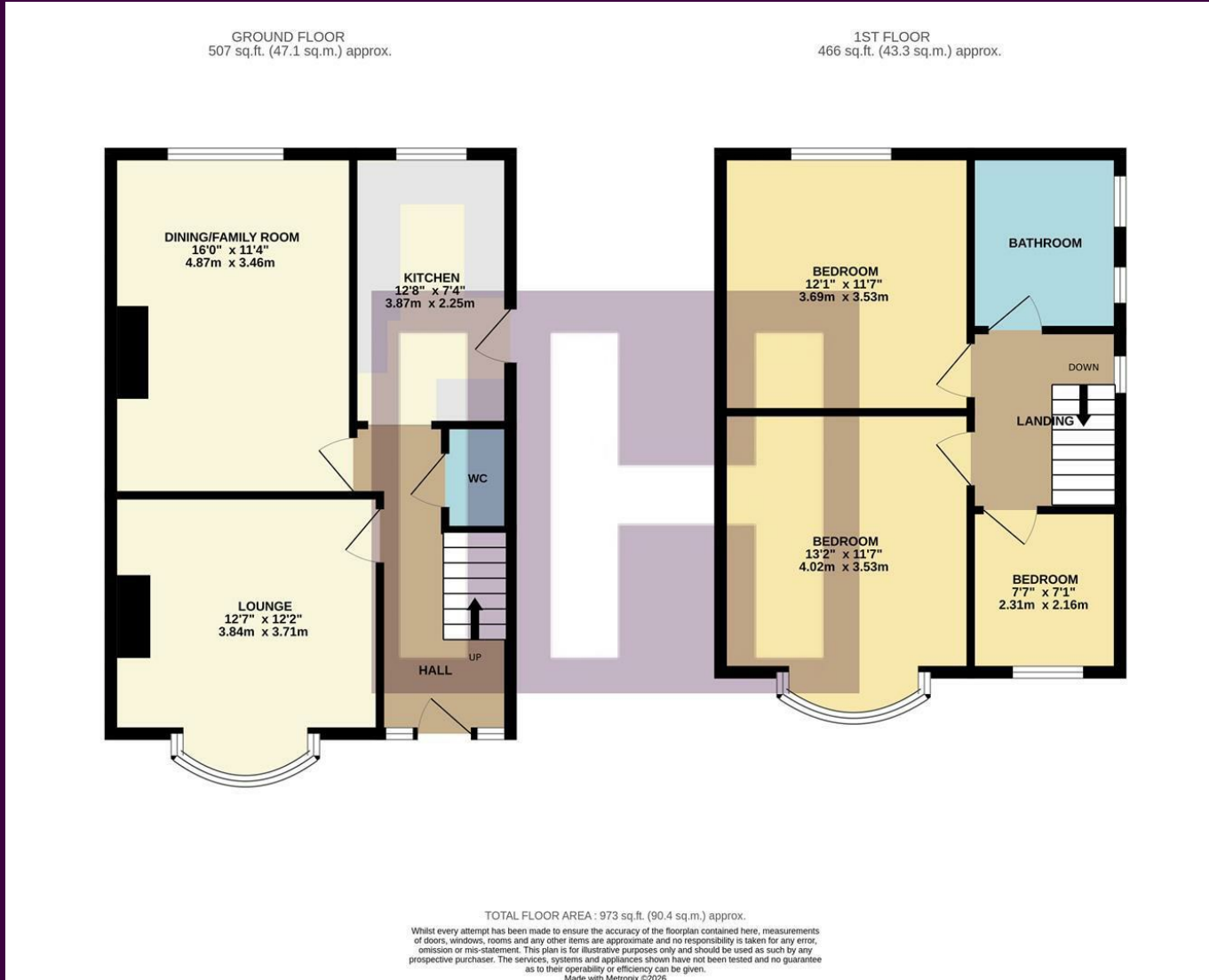
Located within this favoured 'Hartburn' location, close to 'highly regarded' schooling, whilst boasting a lovely rear garden which brings a private side patio, well-tended lawn, and mature borders housing a variety of established greenery proving privacy and a natural border - with timber shed. Complimented at the front by the attractive front garden, and block-paved drive that approaches the side garage.

Internally, features such as the impressive, quality 'Court Homemakers' fitted kitchen and modern, remodelled family bathroom are features of note.

Briefly, the accommodation comprises a welcoming entrance hall, under-stair cloakroom/WC, bay-fronted front lounge, and separate 16ft sitting/family room, and the modern fitted kitchen with built-in appliances and clever 'laundry station' complete the ground floor. The first floor delivers three bedrooms, and the separate family bathroom of stylish white suite, with floating sink-unit and over-bath shower.



The Layout



Energy Efficiency Rating		Environmental Impact (CO ₂) Rating	
Current	Potential	Current	Potential
Very energy efficient - lower running costs			
Very environmentally friendly - lower CO ₂ emissions			
England & Wales			
EU Directive 2002/91/EC		EU Directive 2002/91/EC	

The Location



Council Tax Band:
Tenure:

C
Freehold



- A great example of its kind
- Sought-after 'Hartburn' location close to highly regarded schooling
- In 'great shape' throughout, early viewing advised
- Quality 'Court Homemakers' fitted kitchen, with appliances and 'Laundry Station'
- Two generous reception rooms, the rear extended
- Modern family bathroom
- Established generous rear garden, attractive front garden, drive and garage



www.ingleby-homes.co.uk
01642 671025

IH INGLEBY HOMES